

Schock *Auction Service*

HAY AUCTION

Owners: Melvin and Marian Kallas

Tues., Oct. 17, 2023 - 10am

Location: From Leola, SD: 4 miles East on Hwy 10 to 367th Ave,
then 2 miles South and 1/4 mile East (watch for signs)

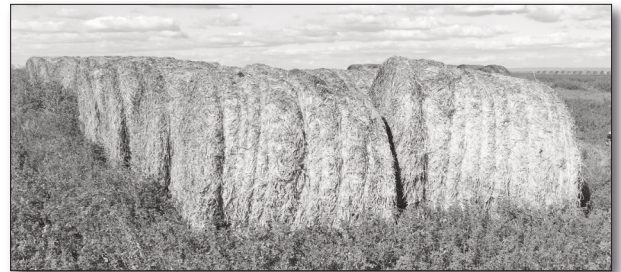
2023

285 First Cutting round alfalfa bales, avg wt 1606
225 Second cutting round alfalfa bales, avg wt 1608
159 Third cutting round alfalfa bales, avg wt 1711
44 Grass hay bales, avg wt 1360



2022

71 First cutting alfalfa round bales, avg wt 1600
7 Second cutting alfalfa round bales, avg wt 1605
225 Round Grass hay bales



27 Older round grass hay bales

Hay analysis tests available day of auction
All bales are sisal twine tied with
New Holland 560 Baler



**For more information, contact Schock Auction at 605-380-2040,
Melvin Kallas at 605-216-8850, or Marian Kallas at 605-216-8851**

CONTACT:

AUCTIONEERS: Dean Schock - 605-380-2040
CLERK: Ina Schock - 605-439-3454 or 605-216-1772

PLEASE NOTE:

Appropriate state and city taxes will be collected. No property removed
until settled for. Not responsible for accidents. **TERMS:** Cash

** Fast * Fair **
** Friendly Service **

SCHOCK AUCTION SERVICE
1103 3rd St., Leola, SD 57456
www.schockauction.com

** Fast * Fair **
** Friendly Service **